



# ECO-Series®

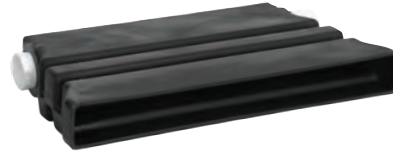
## Universal Waterfall Diffusers

### Installation Instructions

**UWD16**  
16-66 gpm  
16"w x 3½"t x 14" deep



**UWD23**  
25-100 gpm  
23"w x 3½"t x 14" deep



**UWD32**  
32-132 gpm  
(over 100 gpm should be plumbed from both ends)  
32"w x 3½"t x 14" deep



**UWD46**  
50-200 gpm  
(over 100 gpm should be plumbed from both ends)  
46"w x 3½"t x 14" deep



Thank you for purchasing the Eco-Series® Universal Waterfall Diffuser. You are about to experience the Eco-Series® difference in water feature products. The simple design of all Eco-Series® products provides you with reliable, trouble-free installation and maintenance for all your water feature designs. This Universal Waterfall Diffuser is a fast and easy way to create professional looking waterfalls and has the added bonus of allowing you to choose from **two water flow looks**. Install right-side-up for a smooth sheet of water or upside down for a more natural looking water flow.

#### HOW IT WORKS...

Water enters the diffuser and is depressurized. Water then flows over and under the vertical dividers resulting in an even flow of water at the source point. These diffuser units are designed for flows up to 6000 gph from a single end. By using both ends as inlets the UWD32 and UWD46 units can handle higher flows.



1

#### STEP ONE

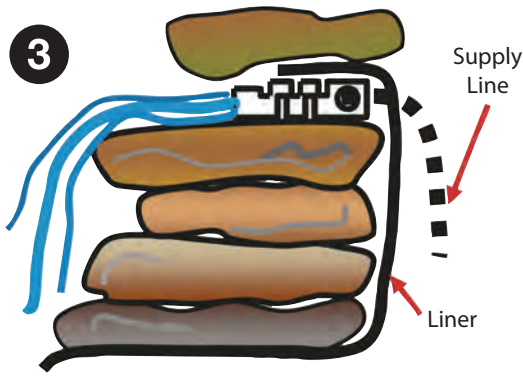
Choose desired water flow. Install diffuser right-side-up (see UWD16 and UWD32 pictures above) for a smooth sheet of water or upside down (see UWD46 and UWD23 pictures above) for a more natural looking water flow. Insert the 2" male adapter into the desired port and tighten. Ideally, silicone or Teflon tape is used on threads for water tight seal.



2

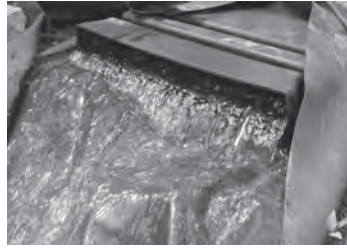
#### STEP TWO

Insert the threaded 2" plug into the unused port and tighten. When using dual diffusers both ends may need to have a male adapter for higher flow rates.



### STEP THREE

Make sure liner goes behind all the stones and up and over the top of the waterfall diffuser.



Typical UWD16 & UWD23 installation

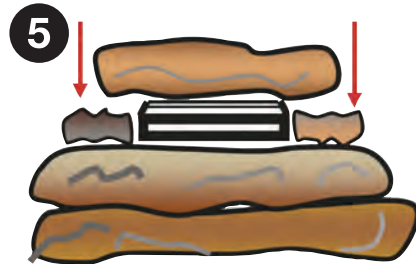


Typical UWD32 & UWD46 installation



### STEP FOUR

Prime and glue the 2" flex pipe or PVC pipe into the 2" male adapter. Hold for two minutes to ensure a good bond.



### STEP FIVE

Make sure the water diffuser is level. Use stone to level off with the diffuser and help support the load.

### NOTE

Do not connect more than three diffusers together. If using more than three diffusers, supply them with water using multiple feed lines. If connecting more than one diffuser use 2" pipe between the diffusers with additional 2" male adapters. Length of pipe between diffusers is determined by desired distance between water outlet points.

### EasyPro Pond Products Limited Warranty

EasyPro Pond Products ("EasyPro") warrants to the purchaser that this product ("Product") will be free from any mechanical or material defects for a period of **five years** from the date of purchase. This warranty only covers properly installed and maintained Products sold by authorized EasyPro Sellers who are subject to and follow EasyPro's quality control standards. Please note that because EasyPro is unable to control the quality of Products sold by unauthorized sellers, unless otherwise prohibited by law, this warranty does not cover Products purchased from unauthorized sellers.

This warranty does not cover normal wear and tear, nor any deterioration suffered through overloading, improper use, negligence, improper installation, acts of God or accident. Similarly, any modification made by the purchaser to the Product will cause the warranty to be null and void. This warranty does not cover any cost associated with the installation or removal of the Product subject to a warranty claim.

All returned items will be inspected to determine cause of failure before a warranty claim is approved. The exclusive remedies provided hereunder shall, upon EasyPro's inspection and option, be either repair or replacement of the Product or parts covered under this warranty.

**Making a Claim:** A Return Authorization ("RA") number must first be obtained by calling EasyPro at 800-448-3873 or via email at [warranty@easypro.com](mailto:warranty@easypro.com). It is the purchaser's responsibility to pay the return shipping charges. Be sure to include the RA number, original receipt (in the form of an invoice or sales receipt), your name, your return address and your phone number inside of the package. No warranty claims will be honored without the original receipt that shows that your purchase was made from an Authorized EasyPro Seller. Ensure the product is properly packaged and insured for the replacement value. Damage due to improper packaging is the responsibility of the sender.

ALL OTHER EXPRESS OR IMPLIED WARRANTIES INCLUDING MERCHANTABILITY OF FITNESS FOR A PARTICULAR PURPOSE ARE HEREBY LIMITED IN DURATION TO THE DURATION OF THE WARRANTY AS DESCRIBED ABOVE. Some States do not allow limitations on how long an implied warranty lasts, so the above limitations may not apply to you.

EasyPro shall not be held liable for any damages caused by defective components or materials of this Product; or for loss incurred because of the interruption of service; or any consequential/incidental damages and expenses arising from the production, sale, use or misuse of this Product. Some States do not allow the exclusion or limitation of incidental or consequential damages, so the above limitation or exclusion may not apply to you.

EasyPro shall not be held liable for any loss of fish, plants or any other livestock as a result of any failure or defect of this Product. This warranty gives you specific legal rights, and you may also have other rights that vary from State to State.

