

# CAS1 • CAS2 • CAS4


Pond Aeration Kit  
Instructions for Operation • Safety • Warranty



Thank you for your purchase of a CAS Pond Aeration Kit. Each complete kit is powered by a continuous duty compressor and also includes tubing and air diffusers. The CAS1, CAS2 and CAS4 Pond Aeration Kits provide an economical way to aerate, destratify and circulate water in ponds and water gardens. The increase in oxygen levels provided by an aeration system is beneficial to any pond but especially to ponds with fish. These kits are ideal for ponds, aquariums and other small fish holding systems. Compact Aeration Series Kits can also be used during winter months to protect fish by keeping a hole open at the surface and preventing deadly gases from building up under the ice.

## Safety and Electrical


**Warning** — Risk of electrical shock. For your protection always unplug the unit from its power source before installing or servicing.

 **Warning** — This compressor is solely intended to pump air. It is not for use with oil, solvents or any petroleum products (gasoline, diesel, etc.).

- Always use a properly grounded AC outlet. Keep plug end from moisture. Do not attempt to plug in a wet plug.
- Provide a “drip loop” for the line cord. This is a loop in the cord below the level of the receptacle or plug that prevents water from traveling along the cord into the receptacle.
- Be sure that a Ground Fault Circuit Interrupter (GFCI) is installed in the branch circuit supplying the aquarium, fountain or pond equipment.
- Unit should be installed horizontally and above the height of water surface.
- Do not submerge compressor. Do not place compressor where it could fall into water.
- If compressor falls in the water, DO NOT retrieve it without first unplugging the unit.
- Do not operate if power cord is damaged.

*Note: EasyPro Pond Products is not responsible for losses, injury or death as a result of failure to follow these safety warnings, misuse or abuse of equipment.*

## Operation Instructions

1. Place compressor on level surface above the water level.
2. Compressor must be protected and housed from the elements. Do not place compressor in low spots where water may puddle. Place compressor in shaded area that is free from excessive dust or moisture.
3. Connect one end of each airline to outlet of the compressor (1, 2 or 4 outlets depending on model) and unroll the tubing to make sure it is not kinked.
4. Cut the airline about 6” to 8” from the compressor and install the check valve. Be sure the check valve is installed correctly so air will pass through. 
5. Connect longer section of airline to the check valve and install the air stone to the end of the airline.

- Place air stone(s) in pond in desired location(s) for best aeration. For kits with multiple air stones, spread them out in the pond to maximize circulation.
- Plug compressor into 120v AC GFCI protected outlet.
- Adjust flow of air on the compressor with switch (CMC3) or dial (CMC5 & CMC8) as needed.

## Maintenance

- Always unplug unit before service, cleaning or any maintenance.
- Over time the air pressure and output will drop which typically requires replacement of the diaphragms to get the compressor back to proper working order. This is considered a normal "wear" item and can be done on a regular basis (every 6 to 12 months) or once loss of output is observed.

 **Warning: Unplug before servicing.**

## Diaphragm Replacement Instructions

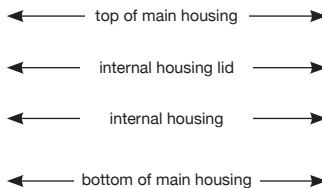
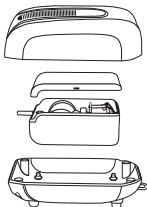
### CAS1 - Single Outlet Compressor - Repair Kit CMC3RK

For more detailed instructions, go to our website at [www.easypro.com/manuals](http://www.easypro.com/manuals)

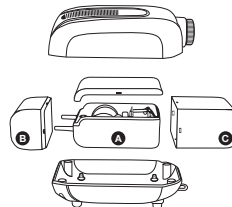


- Unplug unit and remove four screws from bottom of main housing. Carefully tip the top of main housing back to access internal housing.
- To remove lid of internal housing, lift internal housing without straining electrical cords, squeeze longer sides tightly to create a small space where a flat screw driver can be placed.
- Instead of prying, use a slight twisting motion with the screw driver to release the lid of the internal housing.
- With lid off remove screw from side of housing that holds diaphragm assembly in place.
- Remove diaphragm assembly from unit. Inspect magnets and clean if needed.
- Install new diaphragm assembly by holding it securely to the side while tightening screw.
- Arrange electrical cords in slot and press lid back onto internal housing. Place internal housing back into top of main housing. Arrange cords and switch to avoid pinching when reassembling main housing.
- Re-install bottom of main housing and secure with four screws.

CMC3 - Single Outlet Compressor



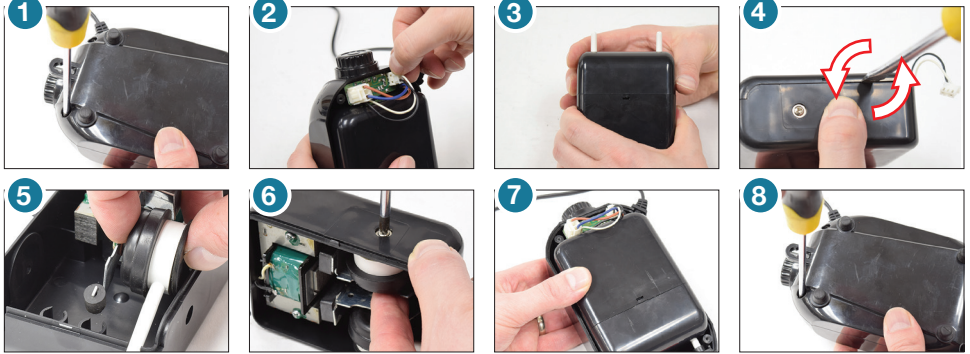
CMC5 - Dual Outlet Compressor



- A** internal housing
- B** front housing cover
- C** back housing cover

## CAS2 - Dual Outlet Compressor - Repair Kit CMC5RK

For more detailed instructions, go to our website at [www.easypro.com/manuals](http://www.easypro.com/manuals)



1. Unplug unit and remove four screws from bottom of main housing. Remove bottom of main housing to access internal housing.
2. Disconnect the electrical connector with black and white wires and remove entire internal housing section. Remove outlet bushings.
3. To remove the housing cover, squeeze the back section while alternately squeezing and pulling the front section off. Use a flat screw driver with a twisting motion (avoid prying) to loosen front cover and then pull front section off. Remove back cover section while guiding the electrical connector through the rectangular hole.
4. To remove lid of internal housing, squeeze longer sides tightly to create a small space for flat screw driver. Use a slight twisting motion with the screw driver to release the lid of the internal housing.
5. Remove screws from side of internal housing to remove diaphragm assemblies from unit. Inspect magnets and clean if needed.
6. Install new diaphragm assembly by holding it securely to the side while tightening screw.
7. Replace the lid of internal housing. Guide electrical connection through the hole in back housing cover and reinstall front cover. Reinstall outlet bushings and place internal housing into base. Reconnect electrical connection.
8. Reinstall bottom housing and secure with four screws.

---

## CAS4 - Quad Outlet Compressor - Repair Kit CMC8RK

For more detailed instructions, go to our website at [www.easypro.com/manuals](http://www.easypro.com/manuals)



1. Unplug unit and remove four screws from bottom housing.
2. Carefully lift top back to have access to internal cover. Remove four screws and internal cover.

*continued on back cover*

## Diaphragm Replacement Instructions

### CAS4 - Quad Outlet Compressor continued

3. Remove screws that hold diaphragm assembly to base. Keep metal bracket at back.
4. Remove diaphragm assemblies leaving air tubes. Inspect magnets and clean if needed.
5. Install new diaphragms, reuse metal bracket to secure to base with screw and reattached air tubes.
6. Reinstall internal cover and bottom housing with corresponding screws.

Part #	Voltage Hz/Watts	Compressor	Compressor Repair Kit	Max. Air Flow	Max. Depth	Max. Pond Size*
CAS1	120 volts 60 Hz / 2.7 watts	CMC3	CMC3RK	.14 cfm	4 feet	up to 1000 gal
CAS2	120 volts 60 Hz / 4 watts	CMC5	CMC5RK	2x.15 cfm 0.3 cfm	4 feet	up to 2000 gal
CAS4	120 volts 60 Hz / 8.2 watts	CMC8	CMC8RK	4x.15 cfm 0.6 cfm	4 feet	up to 3500 gal

*\*Fish load, filtration capacity and other factors affect actual maximum pond size*

## Replacement Parts

Air stone: part # CRAS1

Check valve: part # CASCV

## Troubleshooting

Loss of air output but unit is running:

- Check that the flow control is turned up.
- Check to make sure the air filter has not been blocked or clogged by dust. This is on the underside of the compressors.
- Check to make sure lines are not kinked or plugged.
- Inspect the air stones to ensure they are clean. Replace or clean as necessary.
- Inspect diaphragms. Replace as necessary. See chart above for repair kit part numbers.

Unit is not running:

- The GFCI may have tripped.

## EasyPro Pond Products Limited Warranty

EasyPro Pond Products ("EasyPro") warrants to the purchaser that this product ("Product") will be free from any mechanical or material defects for a period of **two years** from the date of purchase. Diaphragms are wearable items and are not covered under this limited warranty. This warranty only covers properly installed and maintained Products sold by authorized EasyPro Sellers who are subject to and follow EasyPro's quality control standards. Please note that because EasyPro is unable to control the quality of Products sold by unauthorized sellers, unless otherwise prohibited by law, this warranty does not cover Products purchased from unauthorized sellers.

This warranty does not cover normal wear and tear, nor any deterioration suffered through overloading, improper use, negligence, improper installation, acts of God or accident. Similarly, any modification made by the purchaser to the Product will cause the warranty to be null and void. This warranty does not cover any cost associated with the installation or removal of the Product subject to a warranty claim.

All returned items will be inspected to determine cause of failure before a warranty claim is approved.

The exclusive remedies provided hereunder shall, upon EasyPro's inspection and option, be either repair or replacement of the Product or parts covered under this warranty.

**Making a Claim:** A Return Authorization ("RA") number must first be obtained by calling EasyPro at 800-448-3873 or via email at [warranty@easypro.com](mailto:warranty@easypro.com). It is the purchaser's responsibility to pay the return shipping charges. Be sure to include the RA number, original receipt (in the form of an invoice or sales receipt), your name, your return address and your phone number inside of the package. No warranty claims will be honored without the original receipt that shows that your purchase was made from an Authorized EasyPro Seller. Ensure the product is properly packaged and insured for the replacement value. Damage due to improper packaging is the responsibility of the sender.

ALL OTHER EXPRESS OR IMPLIED WARRANTIES INCLUDING MERCHANTABILITY OF FITNESS FOR A PARTICULAR PURPOSE ARE HEREBY LIMITED IN DURATION TO THE DURATION OF THE WARRANTY AS DESCRIBED ABOVE. Some States do not allow limitations on how long an implied warranty lasts, so the above limitations may not apply to you.

EasyPro shall not be held liable for any damages caused by defective components or materials of this Product; or for loss incurred because of the interruption of service; or any consequential/incidental damages and expenses arising from the production, sale, use or misuse of this Product. Some States do not allow the exclusion or limitation of incidental or consequential damages, so the above limitation or exclusion may not apply to you.

EasyPro shall not be held liable for any loss of fish, plants or any other livestock as a result of any failure or defect of this Product. This warranty gives you specific legal rights, and you may also have other rights that vary from State to State.