



# ECO-Series®

## Installation Instructions for Tempo Skimmers



Thank you for purchasing the Eco-Series Tempo Skimmer. You are about to experience the Eco-Series difference in water feature products, components that are simply designed for the do-it-yourselfer. The simple design of all Eco-Series products provides you with reliable, trouble free installation and maintenance for all your water feature designs.

### LOCATION

The first step when installing the Tempo Skimmer in any water garden is selecting the location of the skimmer. Place the skimmer at the opposite end of the waterfall for better circulation, sometimes prevailing winds will dictate the ideal location. The pump connected to the skimmer must be plugged into a weatherproof GFI outlet. The tubing attached to the pump will run from the pump to your waterfall.

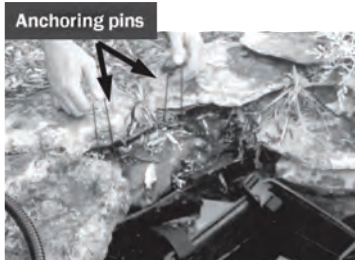
### INSTALLATION ON PLANT SHELF

Mount pump to either side of skimmer with threaded fitting provided. Plug bottom and opposite end port of skimmer with plugs provided.

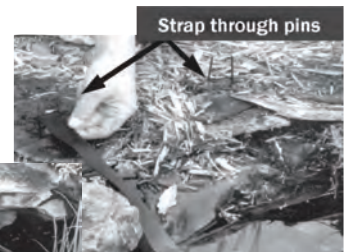
Set skimmer and pump on plant shelf, check for correct height. If the skimmer is too low, you may have to use flat stones or brick to correct the height. Ideal water level should be 2/3 up weir window.



Secure skimmer with straps by threading through slots in back of skimmer and through the anchoring pins that are set 6" - 12" away from pond edge behind liner.



Place coping stones on anchor pins and straps. A stone may be used on the top of the skimmer to conceal it.



## INSTALLATION WITHOUT PLANT SHELF

Mount pump to bottom of skimmer with threaded fitting provided. Plug side ports of skimmer with plugs provided.

Set your anchoring pins, tighten your straps to adjust the height. Place stones on pins, straps and skimmer.



## INSTALLATION IN NEW WATER GARDEN

When installing this skimmer in a new pond, you may recess the skimmer in a pre-dug niche. The skimmer will be installed within the liner, using a corner will usually render enough liner for installation. Attach your pump, usually side installation in this situation, set your pins, straps and cover with stones.

## MAINTENANCE

Empty skimmer basket of leaves and debris when needed.

### EasyPro Pond Products Limited Warranty

EasyPro Pond Products ("EasyPro") warrants to the purchaser that this product ("Product") will be free from any mechanical or material defects for a period of **five years** from the date of purchase. This warranty only covers properly installed and maintained Products sold by authorized EasyPro Sellers who are subject to and follow EasyPro's quality control standards. Please note that because EasyPro is unable to control the quality of Products sold by unauthorized sellers, unless otherwise prohibited by law, this warranty does not cover Products purchased from unauthorized sellers.

This warranty does not cover normal wear and tear, nor any deterioration suffered through overloading, improper use, negligence, improper installation, acts of God or accident. Similarly, any modification made by the purchaser to the Product will cause the warranty to be null and void. This warranty does not cover any cost associated with the installation or removal of the Product subject to a warranty claim.

All returned items will be inspected to determine cause of failure before a warranty claim is approved. The exclusive remedies provided hereunder shall, upon EasyPro's inspection and option, be either repair or replacement of the Product or parts covered under this warranty.

**Making a Claim:** A Return Authorization ("RA") number must first be obtained by calling EasyPro at 800-448-3873 or via email at [warranty@easypro.com](mailto:warranty@easypro.com). It is the purchaser's responsibility to pay the return shipping charges. Be sure to include the RA number, original receipt (in the form of an invoice or sales receipt), your name, your return address and your phone number inside of the package. No warranty claims will be honored without the original receipt that shows that your purchase was made from an Authorized EasyPro Seller. Ensure the product is properly packaged and insured for the replacement value. Damage due to improper packaging is the responsibility of the sender.

ALL OTHER EXPRESS OR IMPLIED WARRANTIES INCLUDING MERCHANTABILITY OF FITNESS FOR A PARTICULAR PURPOSE ARE HEREBY LIMITED IN DURATION TO THE DURATION OF THE WARRANTY AS DESCRIBED ABOVE. Some States do not allow limitations on how long an implied warranty lasts, so the above limitations may not apply to you.

EasyPro shall not be held liable for any damages caused by defective components or materials of this Product; or for loss incurred because of the interruption of service; or any consequential/incidental damages and expenses arising from the production, sale, use or misuse of this Product. Some States do not allow the exclusion or limitation of incidental or consequential damages, so the above limitation or exclusion may not apply to you.

EasyPro shall not be held liable for any loss of fish, plants or any other livestock as a result of any failure or defect of this Product. This warranty gives you specific legal rights, and you may also have other rights that vary from State to State.

