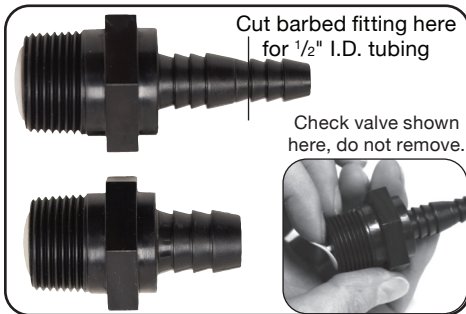
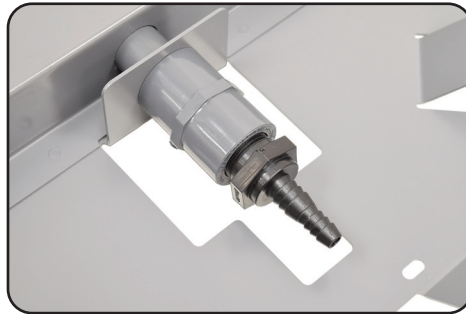




Quick Sink Self Weighted Diffuser Assembly Instructions



1. $\frac{3}{4}$ " MPT barbed check valve is designed to be used with $\frac{1}{2}$ " or $\frac{3}{8}$ " I.D. tubing. Use larger barbed fitting for $\frac{5}{8}$ " ID tubing



2. Screw in correct barbed fitting until snug. **Do not over tighten**, hand tighten only.



Parts Included

- Self-weighted base with plumbing installed
- 10" round, rubber (EPDM) diffuser (two for QS2) – part #MD3
- Hardware kit for connecting to $\frac{3}{8}$ ", $\frac{1}{2}$ " or $\frac{5}{8}$ " ID tubing (not all fittings will be used) – part # QSHK



3. Screw diffuser(s) onto $\frac{3}{4}$ " FPT on top of unit. Snug fitting by hand. **Do not over tighten.**



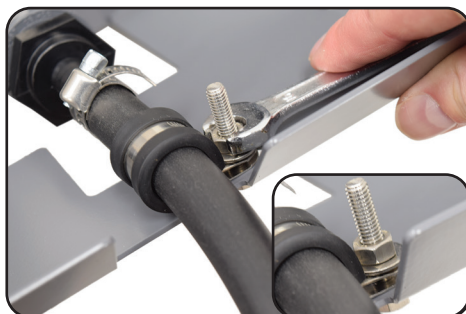
4. Use supplied hose clamp, slip loosely over end of tubing and push tubing tightly onto the fitting.



5. Slide hose clamp over fitting and fasten with regular screwdriver or nut driver.



6. Fit padded hose clamp over tubing. (Use 17.5mm clamp for $\frac{3}{8}$ " tubing or 25.5mm clamp for $\frac{1}{2}$ " and $\frac{5}{8}$ " tubing)



7. Use washer on both sides of base. Insert 10mm bolt from bottom side and tighten nut to clamp down tubing and provide strain relief.



8. Use rope looped through holes in base to assist lowering assembly to pond bottom. Carry only by base, do not lift by diffusers.

QS1 • QS2

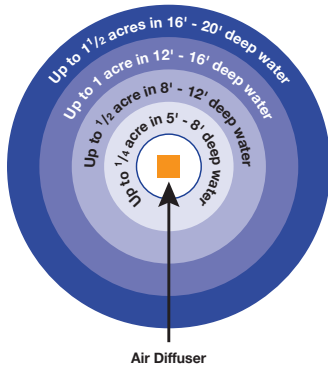
EasyPro Quick Sink Self Weighted Diffuser Assemblies are designed to be placed at the bottom of a pond or lake. The Quick Sink diffuser assembly features round rubber (EPDM) membrane diffusers with thousands of holes which produce small air bubbles when supplied with air from an on shore compressor. These bubbles rise to the surface and create circulation that helps destratify and aerate the water body.

Diffuser Placement:

The amount of surface area an aeration system will effectively cover is greatly dependent on two factors - depth and shape.

Depth:

The diagram to the right shows how much surface area is effectively aerated per air diffuser at various depths:



Example:

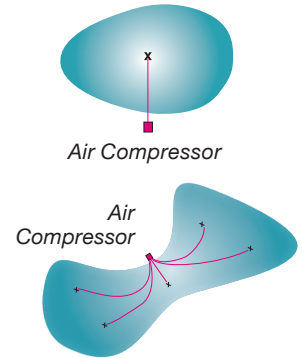
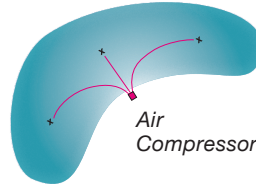
Our PA34 pond aerator would aerate only $\frac{1}{8}$ of an acre if operated in 4' deep water, while aerating up to $\frac{1}{2}$ acres if operating in 16' - 20' of water.

Ponds that are irregular or odd shaped will also reduce size of aeration area.

The deeper an air diffuser is located, the more boiling action it will create and a larger area will be aerated.

Shape:

Pond shape affects the number of diffusers needed. Irregular shaped ponds require multiple diffusers to adequately aerate entire water column.



CAUTION:

- When in or around water always wear a Coast Guard approved life jacket and follow all boating or water safety rules and regulations.
- Use extreme caution operating in winter as open water and thin ice may be created.
- Provide adequate warning for others when using a diffused aeration system during winter months.

Installation:

Be sure to locate the position of the diffuser before assembly, marking it with a temporary buoy. Unroll the tubing that is to be used and secure the shore end near where it will connect with compressor. Leave a few extra feet to work with later. Take assembled diffuser, adequate rope (2x the depth of pond) and any other assembly tools into boat. Carefully reverse to the marked spot pulling tubing as you go. Use the rope to guide the diffuser assembly to the pond bottom. If diffuser may be moved later, a buoy (duck decoy is popular) can be tied to the base. Otherwise, simply let go of one end of the rope to retrieve it from the installed assembly.

Not for brackish or salt water applications — Use EPMD1 or EPMD2 plastic base units for those applications.

Summer Time Start Up:

CAUTION: If you are installing this system at a time when your pond is already stratified (warm on surface, cold on bottom), you should be careful when first starting the aeration system. If the stagnant water on the pond bottom is stirred up too fast, a temporary increase in oxygen demand will occur and, in rare cases, a fish kill could result. If your pond is severely stratified, you should only run your system one to two hours the first day. Each day after that, increase the run time by one to two hours during the first week, run continuously after that. This will slowly mix the bottom water without a sudden depletion of oxygen.

EasyPro Pond Products Limited Warranty

EasyPro Pond Products ("EasyPro") warrants to the purchaser that this product ("Product") will be free from any mechanical or material defects for a period of **five years** from the date of purchase. Metal base may experience surface rusting. This does not typically affect performance and is not considered a warranty issue. Base not for use in brackish or salt water applications. This warranty only covers properly installed and maintained Products sold by authorized EasyPro Sellers who are subject to and follow EasyPro's quality control standards. Please note that because EasyPro is unable to control the quality of Products sold by unauthorized sellers, unless otherwise prohibited by law, this warranty does not cover Products purchased from unauthorized sellers.

This warranty does not cover normal wear and tear, nor any deterioration suffered through overloading, improper use, negligence, improper installation, acts of God or accident. Similarly, any modification made by the purchaser to the Product will cause the warranty to be null and void. This warranty does not cover any cost associated with the installation or removal of the Product subject to a warranty claim.

All returned items will be inspected to determine cause of failure before a warranty claim is approved. The exclusive remedies provided hereunder shall, upon EasyPro's inspection and option, be either repair or replacement of the Product or parts covered under this warranty.

Making a Claim: A Return Authorization ("RA") number must first be obtained by calling EasyPro at 800-448-3873 or via email at warranty@easypro.com. It is the purchaser's responsibility to pay the return shipping charges. Be sure to include the RA number, original receipt (in the form of an invoice or sales receipt), your name, your return address and your phone number inside of the package. No warranty claims will be honored without the original receipt that shows that your purchase was made from an Authorized EasyPro Seller. Ensure the product is properly packaged and insured for the replacement value. Damage due to improper packaging is the responsibility of the sender.

ALL OTHER EXPRESS OR IMPLIED WARRANTIES INCLUDING MERCHANTABILITY OF FITNESS FOR A PARTICULAR PURPOSE ARE HEREBY LIMITED IN DURATION TO THE DURATION OF THE WARRANTY AS DESCRIBED ABOVE. Some States do not allow limitations on how long an implied warranty lasts, so the above limitations may not apply to you.

EasyPro shall not be held liable for any damages caused by defective components or materials of this Product; or for loss incurred because of the interruption of service; or any consequential/incidental damages and expenses arising from the production, sale, use or misuse of this Product. Some States do not allow the exclusion or limitation of incidental or consequential damages, so the above limitation or exclusion may not apply to you.

EasyPro shall not be held liable for any loss of fish, plants or any other livestock as a result of any failure or defect of this Product. This warranty gives you specific legal rights, and you may also have other rights that vary from State to State.