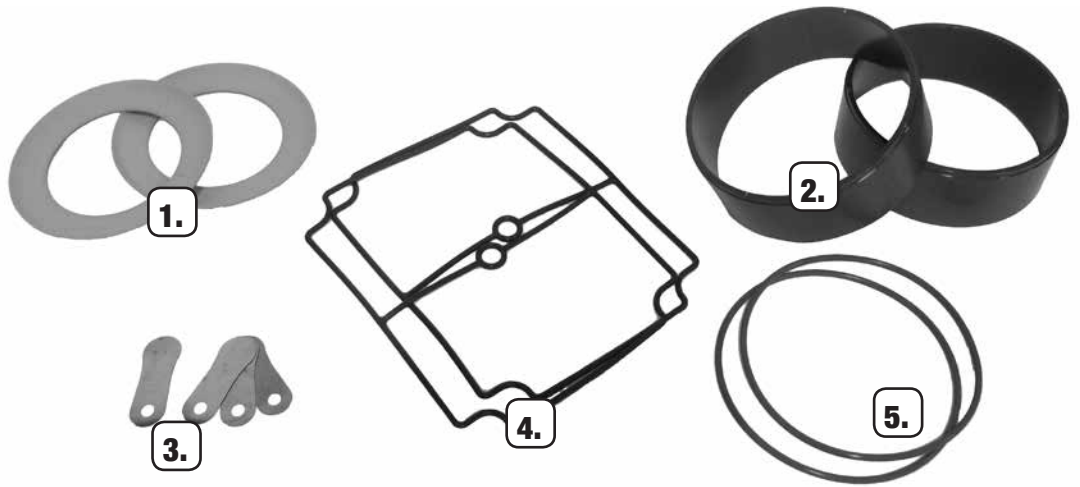


# Stratus ERP Series Repair Kit Instructions

## ERP Repair Kit

1. Piston Cups
2. Piston Rings
3. Leaf Valves
4. Head Gaskets
5. O-ring Gaskets

\*Repair kit contents may vary depending on your ERP compressor.



**WARNING:** Electrical shock hazard. Disconnect electrical supply before performing maintenance. Failure to follow these instructions may result in death, fire or electrical shock.



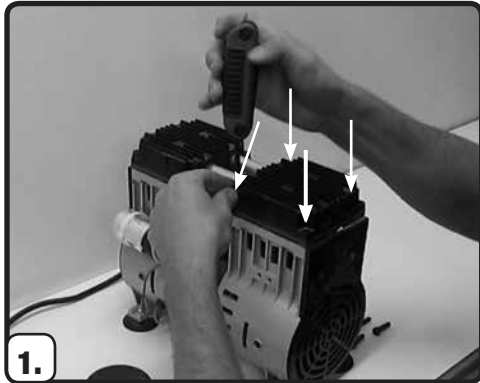
**WARNING:** Injury hazard. Product surfaces become very hot during operation, allow surfaces to cool before handling.



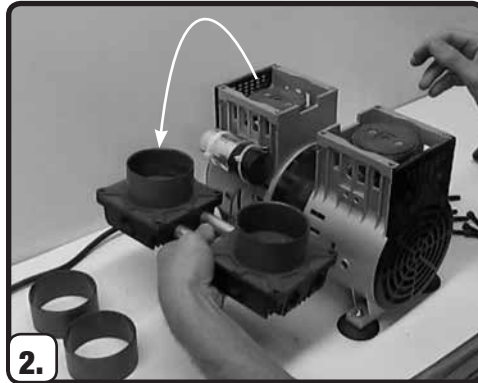
**WARNING:** Do not use oil to lubricate parts. ERP compressors use an oil less design. Using oil may result in failure of the unit.

## Before beginning, you will need:

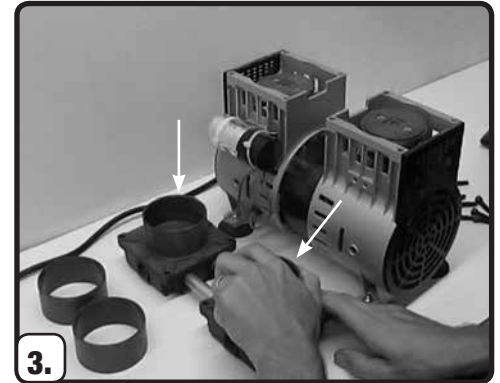
1. #2 Philips screwdriver
2. 4mm or 5mm Allen wrench
3. Utility knife
4. Clean work space



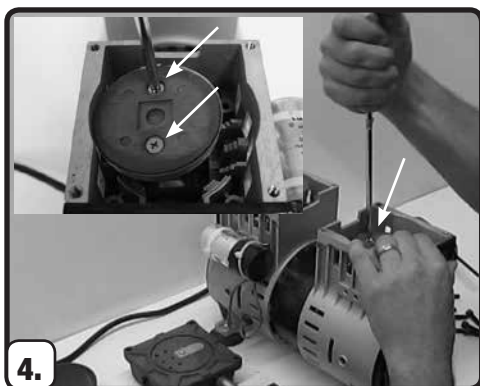
**1.** Unplug unit and remove the screws from the head of the compressor using an Allen wrench



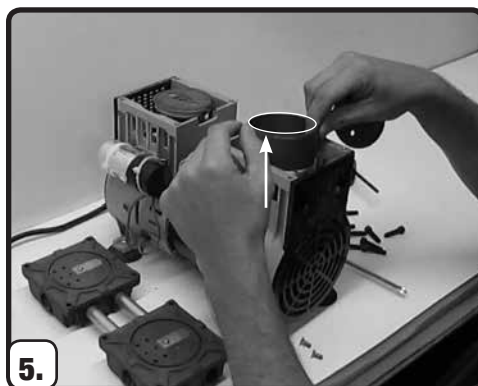
**2.** Remove head of unit, note the orientation to re-install properly



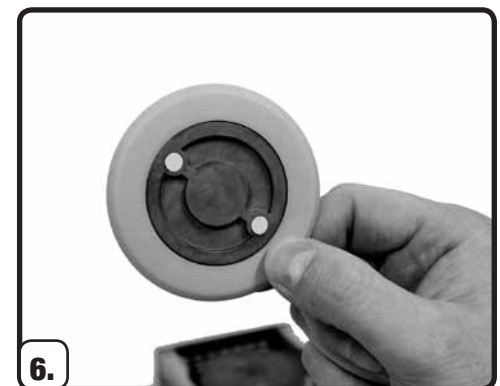
**3.** Remove old piston rings and discard



**4.** Remove the two Phillips screws from the top of the piston and remove the retainer plate

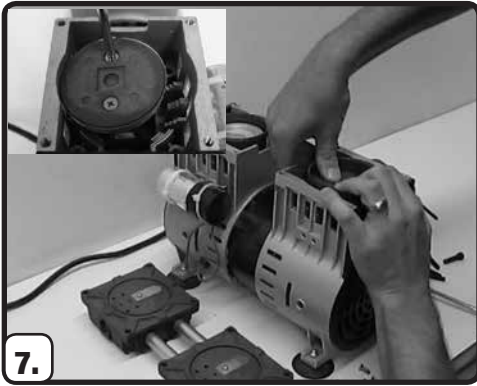


**5.** Set new piston ring on piston, note the grooved side must face upwards

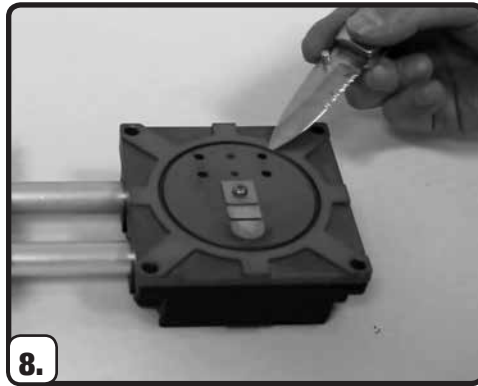


**6.** Set new piston cup onto retainer plate, these parts will sit flat against each other

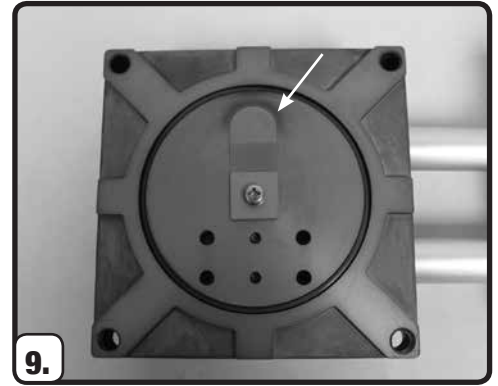
# Stratus ERP Series Repair Kit Instructions



**7.** Press retainer plate into piston ring and replace Phillips screws. Use of low-strength thread locking compound recommended.  
\*Repeat steps 4-7 for dual piston compressors



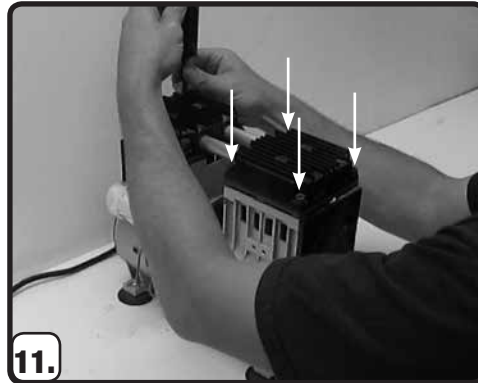
**8.** Remove the o-ring gaskets from the head assembly and press a new gasket into the groove.



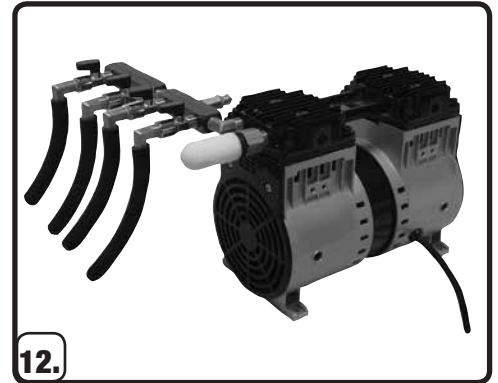
**9.** \*Before reassembly, inspect the head unit for damage or wear. The repair kit includes new head gaskets and leaf valves but these parts do not often need replacement.



**10.** Replace the head of the compressor ensuring the correct, original orientation.



**11.** Tighten the Allen screws on the head of the unit.



**12.** Test you compressor to ensure proper operation then reinstall the unit to your aeration system.



Visit [easypropondproducts.com/resources](http://easypropondproducts.com/resources)

-OR-

[youtube.com/watch?v=4AI0WLSJLao](https://www.youtube.com/watch?v=4AI0WLSJLao)  
for a video walkthrough of this rebuild.