

Vianti Falls

by
EasyPro
pool products

Installation Manual

Thank you for your purchase of the Vianti Falls system from EasyPro. Please read through all instructions before beginning assembly of your Vianti Falls system. Be sure that all components are included before assembly.

Vianti Falls Kit Parts List

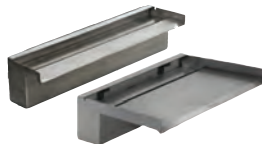
29" Rectangle Basin (24" x 29 ¹ / ₂ " x 13 ¹ / ₂ "h)	1 - RBH29
Vianti Falls Spillway	1 – SSS11 or 1 - SSS611 (single inlet)
Pump	1 – EP850 (3 yr. warranty, 16' cord)
LED Light (15' cord) with 10 watt transformer	HB11K (EX) (No light) HB11KB (EX) – LED11CB (blue light) HB11KW (EX) – LED11WW (white light)
1" Flexible black PVC pipe	6'
Pump discharge assembly with ball valve	1
PVC Glue – 4 oz	1
1" PVC male adaptor (mpt x slip)	1
1" PVC 90 deg elbow (slip x slip)	1
3/4" Bulkhead fitting	1
3/4" Swivel Fitting (fht x mpt)	1
3/4" x 1" Reducing Male Adapter (mpt x slp)	1



Mag Drive Pump



Basin with Splash Mat



Spillway - 2" or 6" lip



LED Light Strip with Transformer



1" 90° PVC Elbow



1" PVC Male Adapter



Reducing Male Adapter



3/4" Bulkhead Fitting



3/4" Swivel Fitting

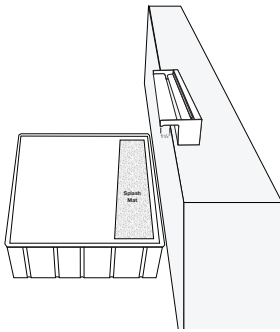


Pump Discharge Assembly



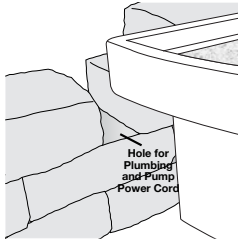
Flexible PVC

1 Determine the placement of the Vianti Falls system. Prepare the base for the 24" x 29 1/2" basin by properly compacting and leveling the area. The Vianti Falls spillway is designed to be placed approximately

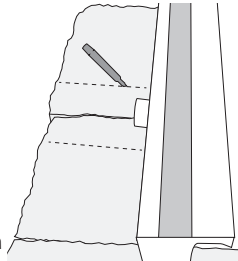


12" to 30" above the basin. The center of the spillway and the basin must be aligned. The spillway must be positioned in the wall to allow for the lip to protrude past the wall at least 1 1/4" (assuming the wall is plumb). This is to ensure water will land in the 6" x 19" splash mat included with the basin.

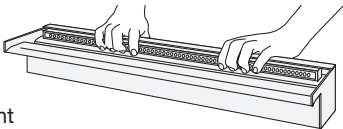
2 When building the block wall, a section of wall must be left out to accommodate the plumbing and electrical cord for the pump.



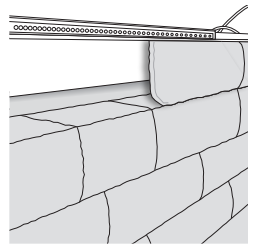
3 Once the spillway placement has been determined in the block wall, the block will need to be cut to allow for the plumbing connections on the back of the spillway. Use appropriate tools and extreme care when cutting block. Consult block manufacturer recommendations for properly cutting block being used.



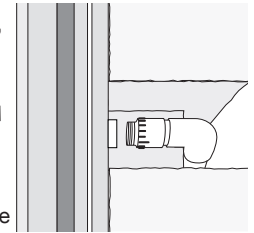
4 If the lighting option is purchased the LED light strip can be fitted into the back of the spillway. There are brackets on the ends of the light bars with holes in them. These brackets are for other applications. The LED light bar should fit snugly into the back of the spillway. If necessary, a small amount of silicone can be used as an adhesive to hold the bar in place.



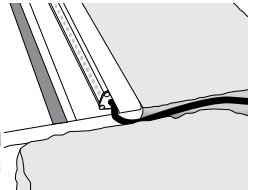
5 The block that goes around the spillway will need to be cut to ensure proper leveling and look of the spillway in the wall. The type of block being used will determine the methods used. A lentiil may be required for longer spillways or in walls that would require additional weight bearing support. Consult a qualified professional for specific installation requirements and codes. The spillway should be "dry fit" to ensure the spillway is level from side to side and front to back.



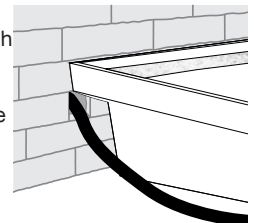
6 Once the spillway is level and "dry fit" the plumbing can now be fitted. Use the 1" PVC male adaptor and the fittings provided to connect spillway to the flexible PVC pipe. Wrap the threads of the PVC male adaptor with Teflon tape and thread into the spillway inlet(s). Determine the placement of additional fittings (elbows, tees, and extra pipe). Cut and glue all the pieces together to fit the application.



7 The cord for the LED light strip can be tucked into the notch in the spillway. A dab of silicone should be used to seal the notch on opposing side. Tuck the cord between the blocks to run the cord to the power source.



8 Run the 1" black flexible PVC through the hole previously provided in the block wall. Carefully measure and cut PVC pipe to proper length. Take extra care to verify the spillway has remained in its level position while measuring and cutting the pipe.



9 Assemble the pump discharge assembly into the $\frac{3}{4}$ " bulkhead fitting in the side of the basin. Make sure the bulkhead is installed so the rubber gasket is inside the tub and the nut with the plastic washer is outside the tub. Take care not to cross thread or over tighten the pump outlet assembly. Since this connection should always be below water, Teflon tape and over tightening is not required.



10 Install the $\frac{3}{4}$ " swivel fitting onto the pump then carefully lower the pump into the basin. Connect the pump discharge assembly with the $\frac{3}{4}$ " swivel fitting and ensure all connections are snug.



11 Install reducing male adaptor in bulkhead fitting on outside of basin. Wrap male threads of fitting with Teflon tape. Before gluing black flexible PVC pipe verify all fittings are tight. Place basin into position, cut the black flexible PVC pipe to length and glue into reducing male adaptor.



12 After making sure all plumbing fittings are properly installed, fill the basin with water. Install basin supports and lid according to basin assembly instructions. The spillway should be tested for proper operation when the wall construction allows. Before final wall installation and covering the basin with rock, the proper flow of the waterfall should be adjusted (if needed) with the ball valve on the pump discharge assembly.

13 Once proper adjustment of the spillway has been determined, put the pump cover in place. The power cord for the pump can run through the notch in the pump cover. The pump cover can be placed in position as shown or reversed. Place the splash mat underneath the waterfall.



14 Finish construction of the block wall and any other decorative stone covering the basin. Be sure to leave rock off the area of the splash mat on the basin where the water naturally wants to fall. This will reduce splash and help retain water in the basin.



Care:

The water used in the Vianti Falls system can be treated with EasyPro All-Season Bacteria and EasyPro Barley Straw Extract to help prevent odors and keep the water clear. A liquid algacide such as Pond Care's Algae Fix or Microbe-Lift's Algaway 5.4 can also be used. Use of chlorine is not recommended, as this may have negative impact on the submersible pump parts.

If water flow appears to be less than normal, water may need to be added to the basin (bubbles in the waterfall typically indicate low water in the basin). A physical inspection of the pump may be necessary. Clean off any debris that may have accumulated on the pump housing or inside the pump. Consult instructions of pump for more information. Do not run pump dry.

Staining on the spillway should not be an issue. Surface staining can often be remedied with baking soda and lime juice application or non-abrasive products such as Bar Keepers Friend. Be sure to follow manufacturer's directions and keep product from entering water with fish and plants.

Should the splash mat need to be replaced, contact your local EasyPro dealer to purchase replacement (part #HB11KM - 6" x 19" black splash mat).

Winterization:

In freezing climates the pump will need to be removed from the basin in the winter. The basin typically does not need to be drained completely in the winter, but in certain climates this may be recommended.

The water level in the basin should be lowered below the outgoing bulkhead fitting.

The stainless steel spillway does not need to be removed for the winter. Water naturally drains from the spillway when the pump is not in use.

EasyPro Pond Products Limited Warranty

EasyPro Pond Products (“EasyPro”) warrants to the purchaser that this product (“Product”) will be free from any mechanical or material defects for a period of:

Vianti Falls Stainless Steel Spillway: **three years** from the date of purchase

Basin: **ten years** from the date of purchase. (tub only)

LED Light Strip – **three years** from the date of purchase.

Pump – **three years** from the date of purchase (see pump owners manual for details)

Splash mat, pump cover and additional pre-installed fittings are considered wearable items and are not covered by this warranty. This warranty only covers properly installed and maintained Products sold by authorized EasyPro Sellers who are subject to and follow EasyPro’s quality control standards. Please note that because EasyPro is unable to control the quality of Products sold by unauthorized sellers, unless otherwise prohibited by law, this warranty does not cover Products purchased from unauthorized sellers.

This warranty does not cover normal wear and tear, nor any deterioration suffered through overloading, improper use, negligence, improper installation, acts of God or accident. Similarly, any modification made by the purchaser to the Product will cause the warranty to be null and void. This warranty does not cover any cost associated with the installation or removal of the Product subject to a warranty claim.

All returned items will be inspected to determine cause of failure before a warranty claim is approved. The exclusive remedies provided hereunder shall, upon EasyPro’s inspection and option, be either repair or replacement of the Product or parts covered under this warranty.

Making a Claim: A Return Authorization (“RA”) number must first be obtained by calling EasyPro at 800-448-3873 or via email at warranty@easypro.com. It is the purchaser’s responsibility to pay the return shipping charges. Be sure to include the RA number, original receipt (in the form of an invoice or sales receipt), your name, your return address and your phone number inside of the package. No warranty claims will be honored without the original receipt that shows that your purchase was made from an Authorized EasyPro Seller. Ensure the product is properly packaged and insured for the replacement value. Damage due to improper packaging is the responsibility of the sender.

ALL OTHER EXPRESS OR IMPLIED WARRANTIES INCLUDING MERCHANTABILITY OF FITNESS FOR A PARTICULAR PURPOSE ARE HEAREBY LIMITED IN DURATION TO THE DURATION OF THE WARRANTY AS DESCRIBED ABOVE. Some States do not allow limitations on how long an implied warranty lasts, so the above limitations may not apply to you.

EasyPro shall not be held liable for any damages caused by defective components or materials of this Product; or for loss incurred because of the interruption of service; or any consequential/incidental damages and expenses arising from the production, sale, use or misuse of this Product. Some States do not allow the exclusion or limitation of incidental or consequential damages, so the above limitation or exclusion may not apply to you.

EasyPro shall not be held liable for any loss of fish, plants or any other livestock as a result of any failure or defect of this Product. This warranty gives you specific legal rights, and you may also have other rights that vary from State to State.

